



Advanced Simulation Technology inc.
500A Huntmar Park Drive
Herndon, Virginia 20170 USA
Tel. (703) 471-2104 • Fax. (703) 471-2108
www.asti-usa.com

PTT Options Overview

Document: DOC-HW-PTT-OV-E-0

Product Name: N/A

PTT Options Overview

© Copyright ASTi 2018

Restricted Rights: Use, duplication, or disclosure by the Government is subject to restrictions as set forth in subparagraph (c)(1)(ii) of the Rights in Technical Data and Computer Software clause at DFARS 252.227-7013.

This material may be reproduced by or for the U.S. Government pursuant to the copyright license under the clause at DFARS 252.227-7013 (1994).

ASTi

500A Huntmar Park Drive

Herndon, Virginia 20170 USA

Revision history

Date	Revision	Version	Comments
12/10/2010	D	0	N/A
1/26/2018	E	0	Convert PTT Options Overview to XML; add "Radius PTT device," add image to "Stereo PTT device," and add Delcom switch information to "Third-party PTT devices."

Contents

1.0 ASTi press-to-talk devices	1
1.1 PTT device with volume knob	2
1.2 PTT device with four-channel select	3
1.3 Stereo PTT device	4
1.4 Radius PTT device	5
1.5 Third-party PTT devices	6

1.0 ASTi press-to-talk devices

The press-to-talk (PTT) device enables operator transmissions over ASTi-simulated intercoms or radios. This guide discusses ASTi's most common PTT options and capabilities, allowing you to select which option best suits your system requirements. For a complete list of available PTT devices, see [PTT and Switch Part Numbers \(#87\)](#).

The PTT may have a mono audio signal output to the headset or a stereo signal output with separate channels for the left and right ear cup. For example, the stereo PTT is needed when you want to hear radios in one ear cup and intercoms in the other ear cup or when you want to hear different warning tones in separate ears.

The PTT device may have the following options:

- Mono or stereo
- Momentary or latching switch
- Single or four-channel selection
- Volume knob

Latching mode is typically used when you have a single channel to talk on using the PTT switch, also known as "hot mic" capability.

PTT devices can have an internal resistor that allows the ASTi device to detect which direction the toggle switch is being pressed (i.e., forward or backward). The resistor option is useful when you want to switch between two channels, and the switch acts as a channel selector. For example, pushing the switch forward selects an intercom and pushing it backward selects a radio. Typically, this application requires the non-latching switch option.



Note: Not all ASTi devices support the internal resistor option. Please see specific device documentation.

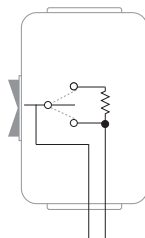


Figure 1: Internal resistor

The remainder of this document describes the following PTT devices:

- PTT device with integral volume knob
- PTT device with four-channel select



Note: The four-channel PTT device is compatible with the Iris (Telestra 3/MBV), ACU/ACU2 (Telestra/ACE), ACU2 (Voisus), and AI-S (Voisus)

- Stereo PTT device
- Radius PTT device
- Foot switch PTT device

1.1 PTT device with volume knob

ASTi's standard PTT device includes a volume knob on the side. The opposite site contains a bi-directional rocker-type PTT switch. Pressing the switch in one direction results in momentary transmission, while pressing the switch in the other direction latches for continuous transmission. As shown below, the bottom of the PTT connects to an ASTi device, while the top connects to a mono headset. The connectors are External Line Return (XLR).

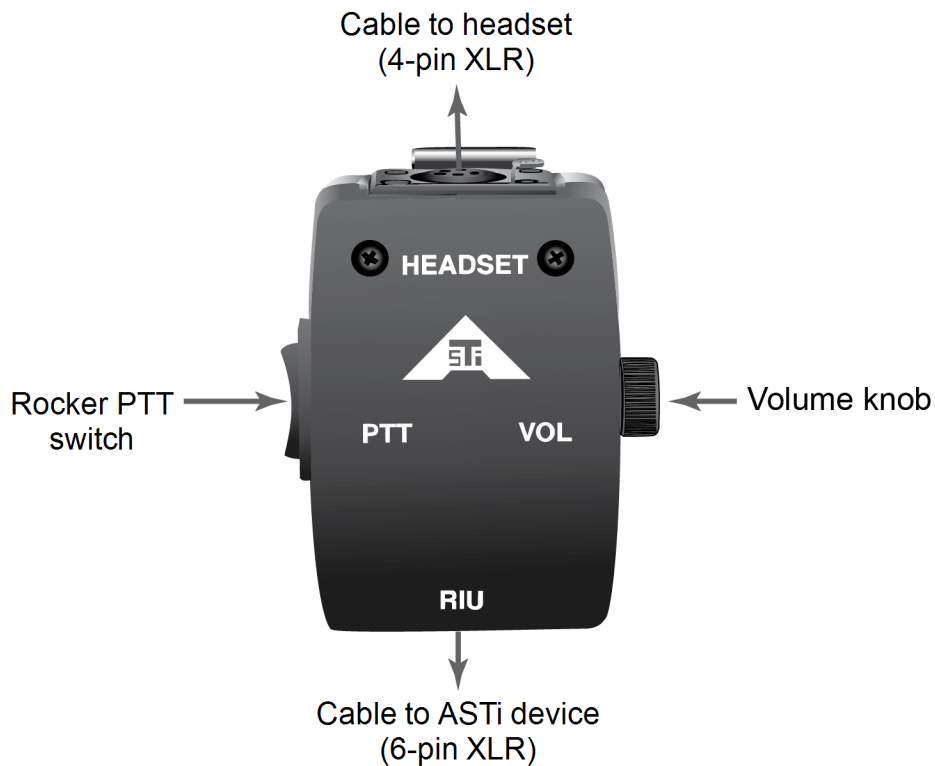


Figure 2: PTT device with volume knob

1.2 PTT device with four-channel select

The PTT device with four-channel select is for use with specific Model Builder Visual (MBV), ACE/Telestra, or Voibus devices. The channel select knob is a four-position switch that selects channels or radios within a model. The PTT device has a volume knob and a press-to-talk switch. Pressing the switch in one direction results in momentary transmission, while pressing the switch in the other direction latches for continuous transmission. The bottom of the device connects to an audio input/output (I/O) device. The top of the device connects to a mono headset.

The following figure shows a PTT device with four-channel select:



Figure 3: PTT with four-channel select

1.3 Stereo PTT device

The PTT device with stereo support offers independent volume control with a latching PTT switch. The bottom has a 10-pin circular connector for stereo support. The stereo PTT device comes with and without the four-channel selector.

The stereo PTT device with the four-channel selector is for use with specific Model Builder Visual (MBV), ACE/Telestra, or Voisus devices. The channel select knob is a four-position switch that selects channels or radios within a model. The PTT device has a volume knob and a press-to-talk switch. Pressing the switch in one direction results in momentary transmission, while pressing the switch in the other direction latches for continuous transmission. The bottom of the device connects to an audio input/output (I/O) device. The top of the device connects to a mono headset.

The following figure shows stereo PTT devices with and without the four-channel selector:



Figure 4: Stereo PTT with/without four-channel select

1.4 Radius PTT device

The Radius is a USB audio device with an integrated PTT switch. The bottom of the Radius has a USB mini-B connector, while the top of the Radius has an XLR connector for a headset. The Radius is compatible with ACE/Telestra and standard Voisus clients as well as Windows and Linux systems.

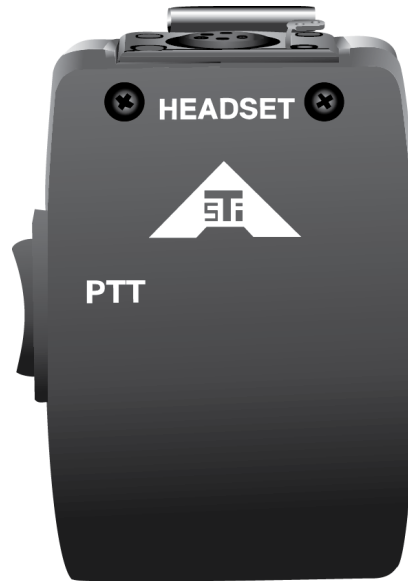


Figure 5: Radius PTT

1.5 Third-party PTT devices

ASTi offers two types of third-party PTT devices:

- Analog PTT foot switch
- Delcom USB HID Programmable Quad Button Switch

Analog PTT foot switches are compatible with all ASTi devices. The following figure shows an analog PTT foot switch:

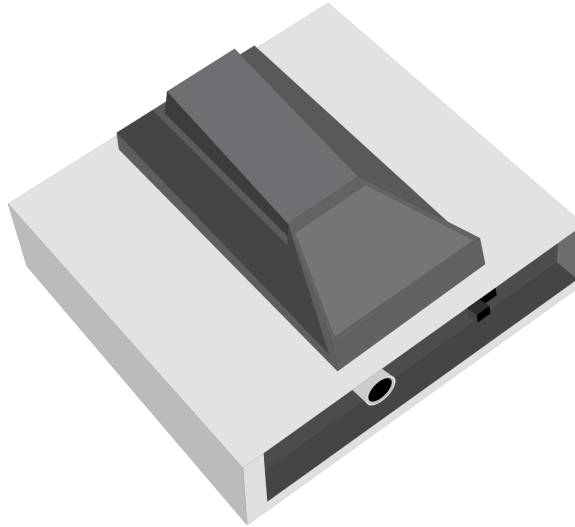


Figure 6: Analog PTT foot switch

Voisus software clients are also compatible with Delcom USB HID Programmable Quad Button Switches. For more information about Delcom product details, see [USB HID Programmable Quad Button Switch w/2M Cable](#) and [USB HID Programmable Single Button Switch w/5M Cable and Flange Mount](#). For more information about the Delcom switch's compatibility with Voisus clients, see "Delcom USB HID Programmable Quad Button Switch" in the [Voisus Client User Guide](#).

Support for additional third-party PTT devices depends on whether the operating system (OS) supports the USB HID type and client software version. For questions about Voisus's compatibility with another device, contact ASTi.